



A smooth face, brushed back and contrast coverstitching make this warm fleece jacket a classier alternative to more casual fleece.

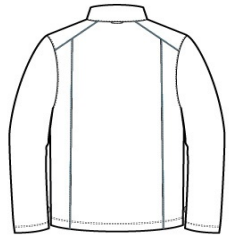
- Can be zipped in and secured by snap attachments inside an outer Collective layer
- 9.8-ounce, 100% polyester fleece
- Slightly longer length
- Zip-through cadet collar
- Vislon® center front zipper
- Front reverse-coil zippered pockets
- Open cuffs and hem

**CARE INSTRUCTIONS**

Machine wash cold with like colors; do not use fabric softener; tumble dry low; remove promptly; only non-chlorine bleach when needed; cool iron if necessary; do not dry clean.



front



back

**HOW TO MEASURE**



**CHEST**

With arms down at sides, measure around the upper body, under arms and over the fullest part of the chest.

**SIZE CHART**

	XS	S	M	L	XL	2XL	3XL	4XL
Chest	32-34	35-37	38-40	41-43	44-46	47-49	50-53	54-57

**COLOR INFORMATION**

